



# POOPSIE™

## SLIME SURPRISE!

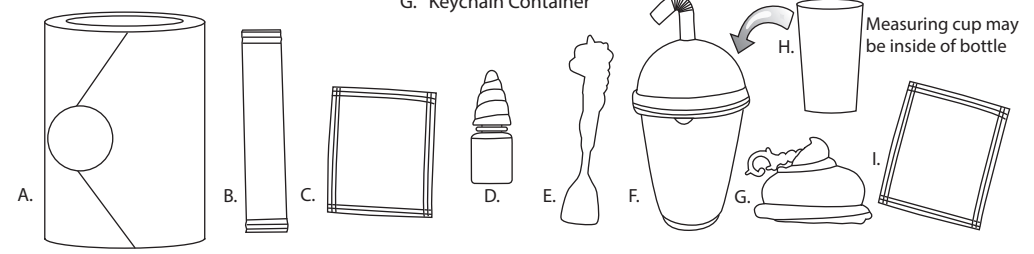
Age 6+

**WARNING:**  
CHOKING HAZARD-Small parts.  
Not for children under 3 years.

SKUs: 553335, 554530,  
554813, 554820  
ADULT SUPERVISION REQUIRED

### CONTENTS

- A. Storage Case with Lid
- B. Unicorn Food (Slime Powder)
- C. Unicorn Magic (Special Effect Powder)
- D. Surprise Scent
- E. Unicorn Spoon
- F. Bottle with Lid
- G. Keychain Container
- H. Measuring cup
- I. Unicorn Sparkle (Glitter- Ultra-Rare packs only)



Illustrations are for reference only. Styles may vary from actual contents.

### OPEN YOUR BOTTLE

NOTE: Each bottle opens differently. Most bottles have a tab to lift off the lid. Find your surprise bottle shape below to see how to open it:



Please keep this manual as it contains important information.



0718-4-E

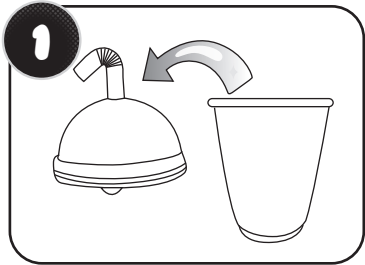
WWW.POOPSIESLIMESURPRISE.COM  
 ©2018 MGA Entertainment, Inc.  
 POOPSIE™ and POOPSIE SLIME SURPRISE!™ are trademarks of MGA in the U.S. and other countries. All logos, names, characters, likenesses, images, slogans, and packaging appearance are the property of MGA.  
 16300 Roscoe Blvd.  
 Van Nuys, CA 91406 U.S.A.  
 (800) 222-4685  
**Printed in China**



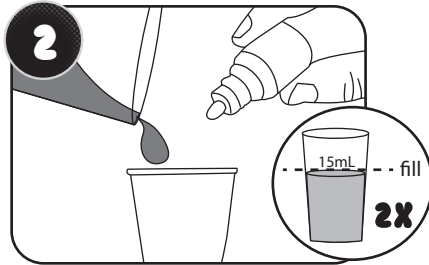
The preferred method of contact for Customer Service is through our e-mail contact form at [www.mgae.com](http://www.mgae.com)

# MAKE UNICORN POOP!

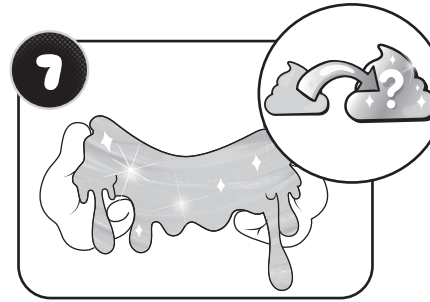
Before beginning, cover the play area to prevent possible damage.



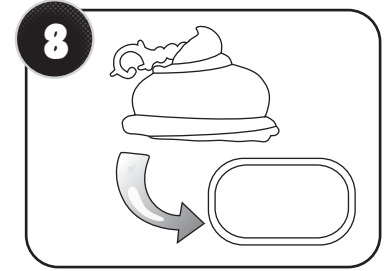
Remove the lid from the included bottle.



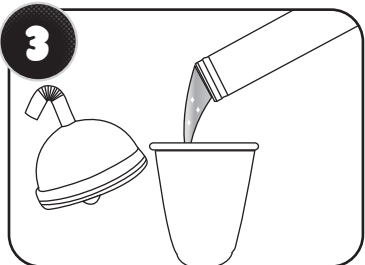
Fill the measuring cup to the fill line marked 15 mL with water, and pour it into bottle. Then, fill and repeat once more (total 30mL of water). Then, add 5 drops of the surprise scent to the bottle.



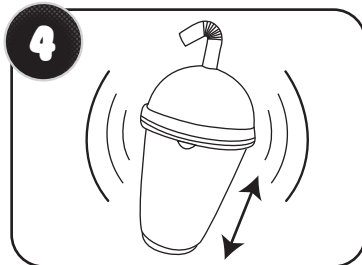
Fold the slime in half and continue folding and pulling the slime until all the powder is thoroughly blended into the slime. Your slime will change to a surprise color! TIP: Mix in additional scent if desired.



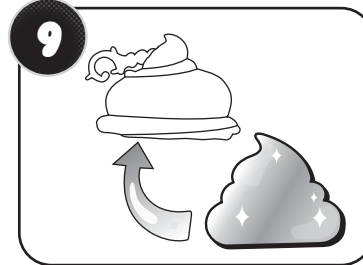
Open the keychain container by removing the cover on the bottom of the keychain.



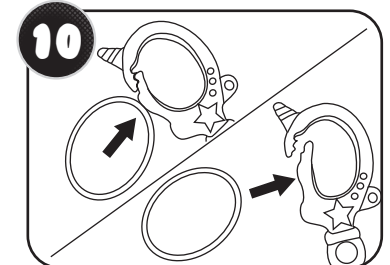
Tear open the unicorn food packet and pour the powder into the bottle.



Tightly snap the lid onto the bottle. Then, hold the lid, and rapidly shake the bottle up and down for 1 minute. Let the mixture sit for 10 minutes to allow the slime to harden.



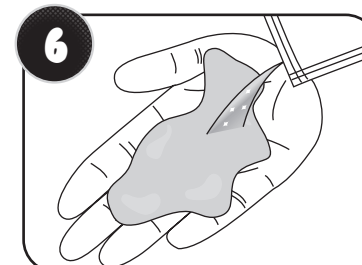
Store the slime inside of the keychain container. Then, replace the cover under the keychain.



Add your keychain to your own accessories! Press the opening of the clip firmly against a key ring to attach it, or carefully pull apart the clip to open it and slide it onto your accessories.



Open the lid and use the unicorn spoon to remove the slime from the bottle.



Tear open the unicorn magic packet. Hold the slime in the palm of one hand, then use your other hand to pour the powder onto the center of the slime. Add unicorn magic a little at a time. NOTE: If you have rare slime, tear open the unicorn sparkle, and add it in this step.

## IMPORTANT INFORMATION

- Not for children under 3 years. Keep out of reach of very young children.
- Adult supervision is required when children are playing with water.
- Some contents are stored on the inside of the toilet paper roll. Do not discard!
- Contents are not real food. Do not eat.
- Not all slime will fit inside of the keychain container. Store extra slime in the included bottle!
- Keep slime away from paper surfaces, as it will stick permanently.
- Color transfer from pigments may occur. Wash hands thoroughly after use and keep slime away from clothing and surfaces other than the bottle and slime container.
- Keep contents away from eyes, mouth and face.
- Avoid contact with the eyes. Keep away from damaged skin. Use under adult supervision.
- Tightly close the lid on the slime container after each use.
- Do not dispose of slime in the drain. Dispose in a trash receptacle once you are finished playing with it.
- Clean the bottle and slime container with water. Rinse thoroughly and air dry in a well-ventilated area.
- Slime will dry out over time. Store in a sealed container to prevent drying out when not in use.
- Store contents inside of the storage case with lid after use. Twist the lid to lock in place.
- Unicorn sparkle is only included in ultra-rare packs. Collect them all!
- The glasses on the pineapple cup are not intended for consumer use and should not be worn in direct sunlight.